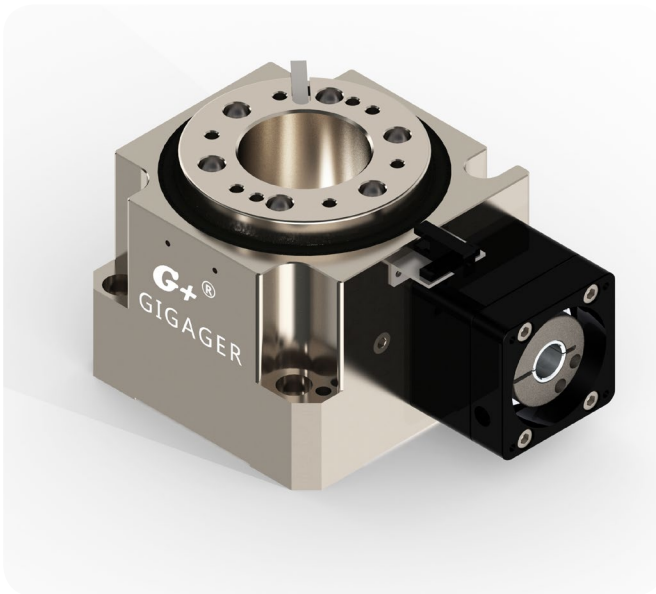


G+[®] GSH Hypoid Gear Rotary Table

High Precision, High Efficiency, High Rigidity, High Torque



High Precision

The spiral guide Hypoid Gear has the advantages of higher reduction ratio, high torque, high precision and low wear than the spiral bevel. The sliding mode rotates, the transmission precision can reach 30 arc seconds, the transmission efficiency is up to 96%; the gear geometric tolerance $\leq 0.002\text{mm}$, up to JIS0 level standard.

IP Grade IP65

Suitable for environments with high humidity, waterproof and dustproof.

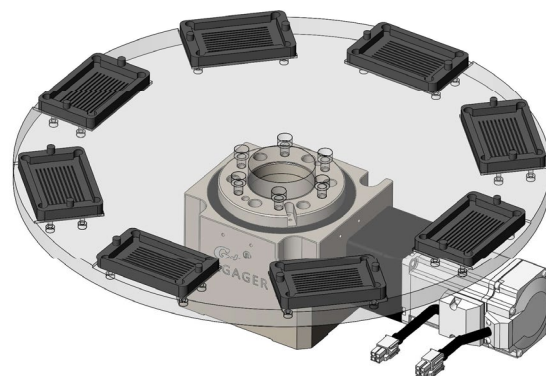
High Torque, High Rigidity

The housing is made of alloy steel and has a large modulus root design, which is suitable for the rotation of large inertia loads.

Long Life

With high hardness and high density gear materials, the precision life can reach 30,000hr.

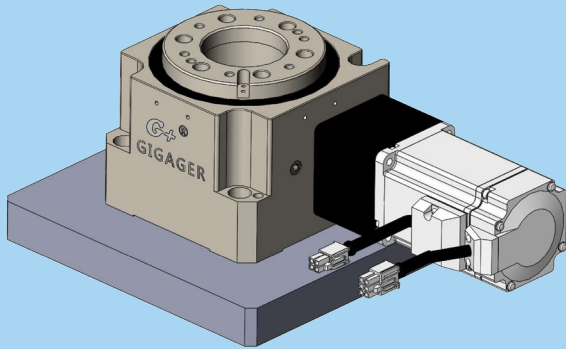
Widely used for auto transmission system,
CNC and robot arm fields.



Example

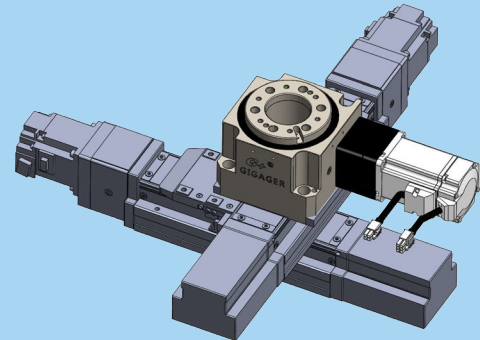
■ Installation

Horizontal Installation

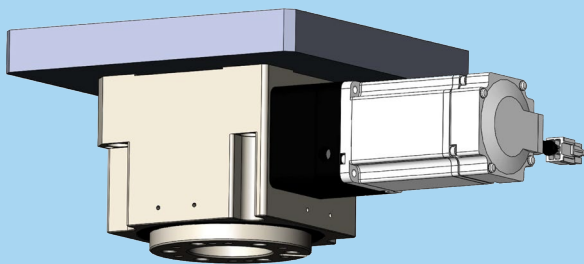


■ Example

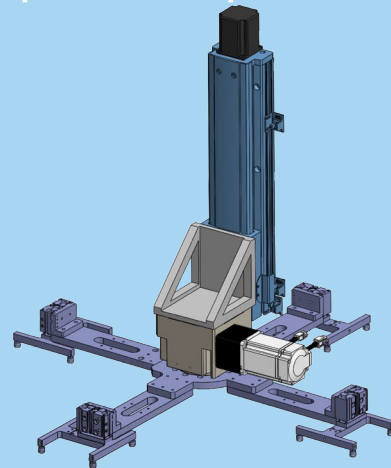
Combine with GXY Series



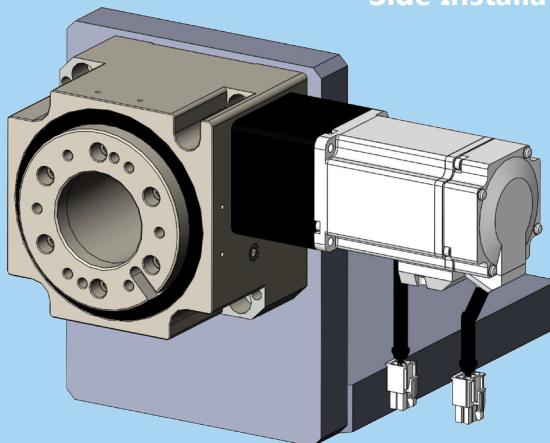
Suspension Installation



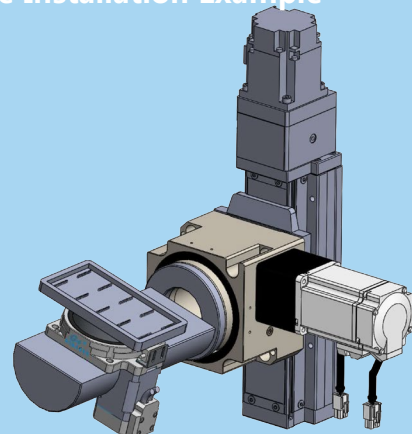
Suspension Example



Side Installation



Side Installation Example



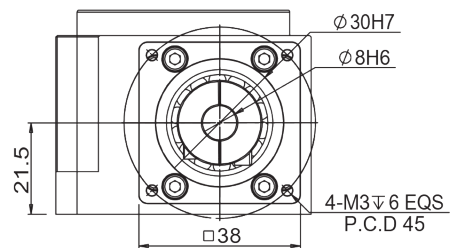
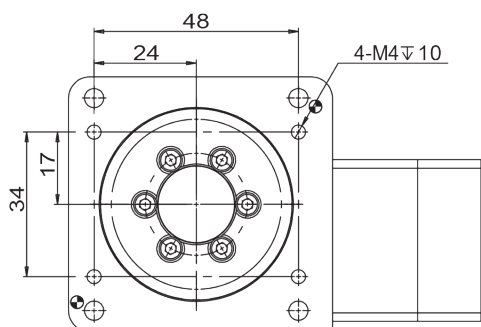
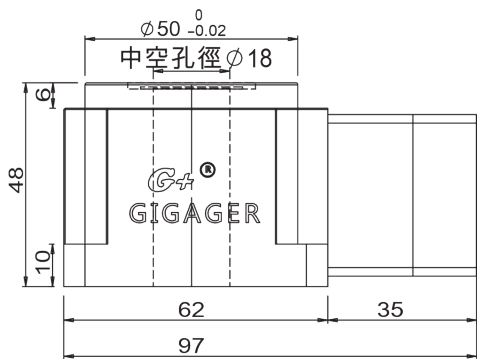
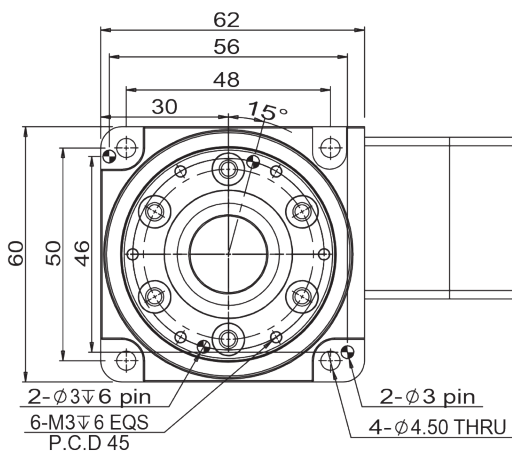
GSH60

Series	Size	Ratio	Motor Model
GSH	60	30K	SV1

60
100
150
200

SV1 : Servo Ø8 PCD45,M3
 SV2 : Servo Ø8 PCD46,M4
 suit for any brand 100W AC servo motor

ST1 : Stepper Ø5 PCD43.8,M3
 ST2 : Stepper Ø6 PCD43.8,M3
 suit for any brand 42 stepper motor



Parameter

Bearing		Cross Roller Bearing
Permissible Torque	N.m	30
Permissible Table Surface Speed	rpm	90
Gear Ratio	i	30
Repeatability	arc-sec	≤ 10
Positioning Accuracy	arc-sec	≤ 50
Permissible Axial Load	N.m	300
Table Flatness	mm	≤ 0.01
Table Concentricity	mm	≤ 0.01
Precision Life hr (Intermittent)		30000
IP Grade	IP	40
Weight	kg	0.9

GSH100

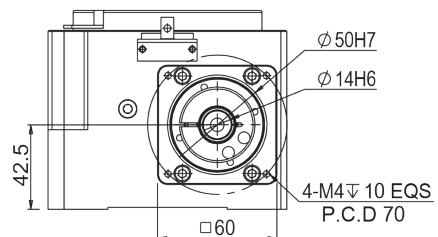
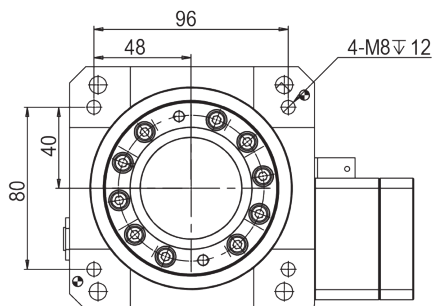
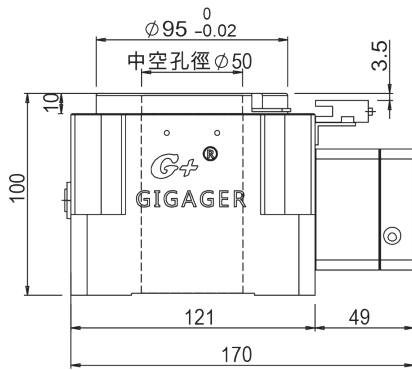
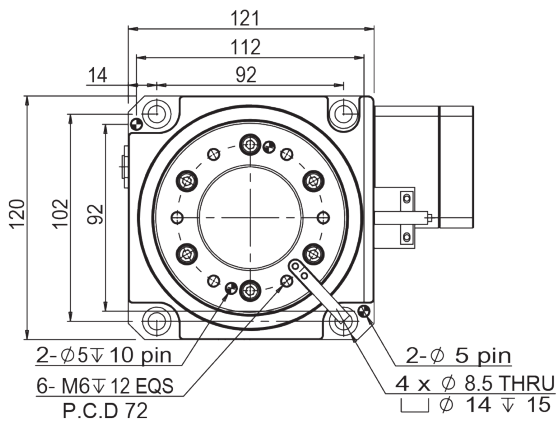
Series	Size	Ratio
GSH	100	30K

60
100
150
200

Motor Model
SV1

SV1 : Servo Ø14 PCD70,M4
 SV2 : Servo Ø14 PCD70,M5
 suit for any brand 200~400W AC servo motor

ST1 : Stepper Ø6.35 PCD66.67,M4
 ST2 : Stepper Ø8 PCD70,M4
 ST3 : Stepper Ø10 PCD70,M4
 suit for any brand 60 stepper motor



Parameter

Bearing		Cross Roller Bearing
Permissible Torque	N.m	115
Permissible Table Surface Speed	rpm	90
Gear Ratio	i	30
Repeatability	arc-sec	≤ 10
Positioning Accuracy	arc-sec	≤ 50
Permissible Axial Load	N.m	2500
Table Flatness	mm	≤ 0.01
Table Concentricity	mm	≤ 0.01
Precision Life hr (Intermittent)		30000
IP Grade	IP	65
Weight	kg	8.5

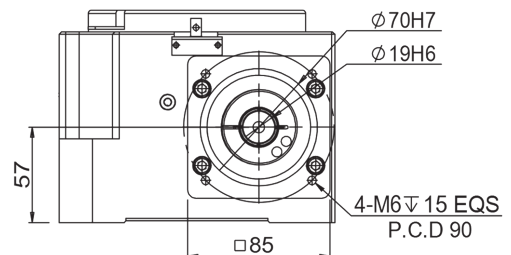
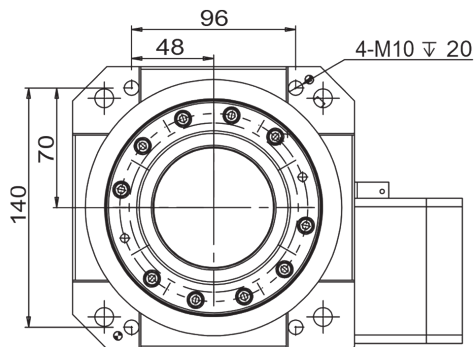
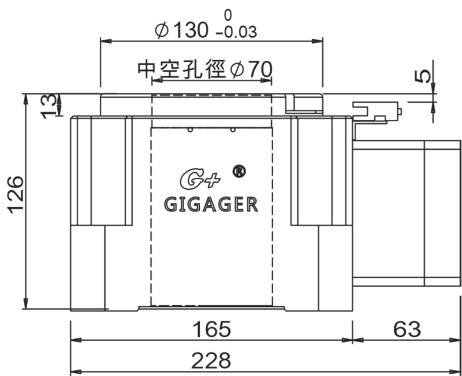
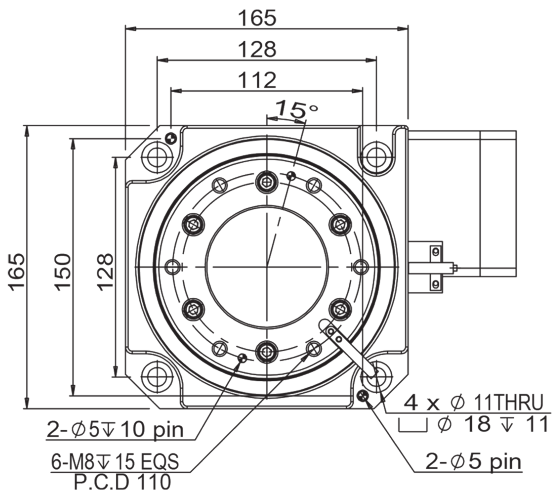
GSH150

Series	Size	Ratio	Motor Model
GSH	150	30K	SV1

60
100
150
200

SV1 : Servo Ø19 PCD90,M5
 SV2 : Servo Ø19 PCD90,M6
 suit for any brand 750W AC servo motor

ST1 : Stepper Ø14 PCD98.4,M5
 suit for any brand 86 stepper motor

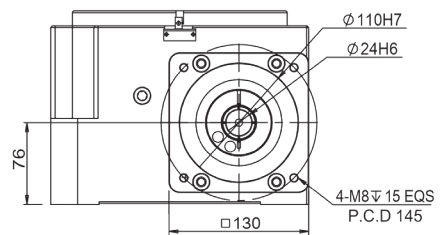
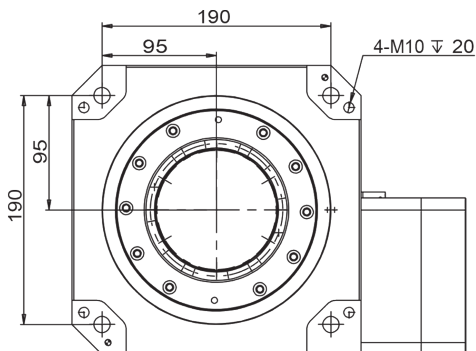
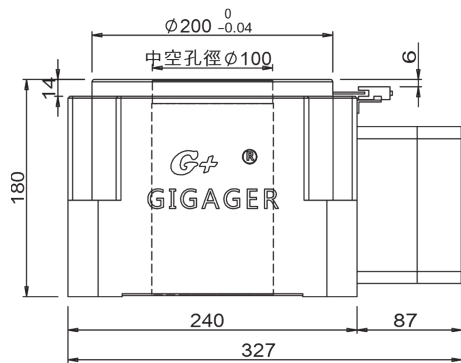
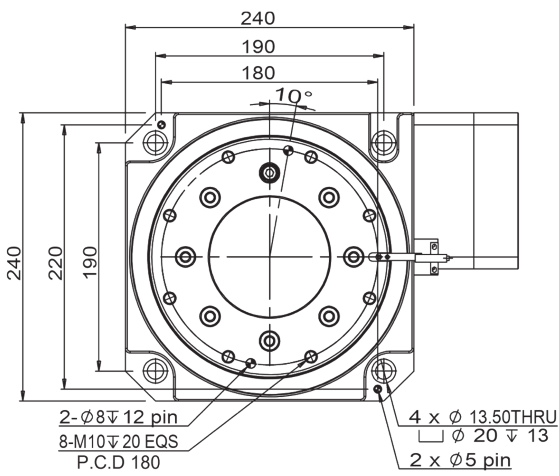


Parameter

		Cross Roller Bearing
Bearing		Cross Roller Bearing
Permissible Torque	N.m	220
Permissible Table Surface Speed	rpm	90
Gear Ratio	i	30
Repeatability	arc-sec	≤ 10
Positioning Accuracy	arc-sec	≤ 50
Permissible Axial Load	N.m	6000
Table Flatness	mm	≤ 0.01
Table Concentricity	mm	≤ 0.01
Precision Life hr (Intermittent)		30000
IP Grade	IP	65
Weight	kg	18

GSH200

Series	Size	Ratio	Motor Model
GSH	200	30K	SV1
	60 100 150 200		SV1 : Servo Ø22 PCD145,M6 SV2 : Servo Ø24 PCD145,M8 suit for any brand 1000W AC servo motor



Parameter

Bearing		Cross Roller Bearing
Permissible Torque	N.m	450
Permissible Table Surface Speed	rpm	90
Gear Ratio	i	30
Repeatability	arc-sec	≤ 10
Positioning Accuracy	arc-sec	≤ 50
Permissible Axial Load	N.m	10000
Table Flatness	mm	≤ 0.01
Table Concentricity	mm	≤ 0.01
Precision Life hr (Intermittent)		30000
IP Grade	IP	65
Weight	kg	57